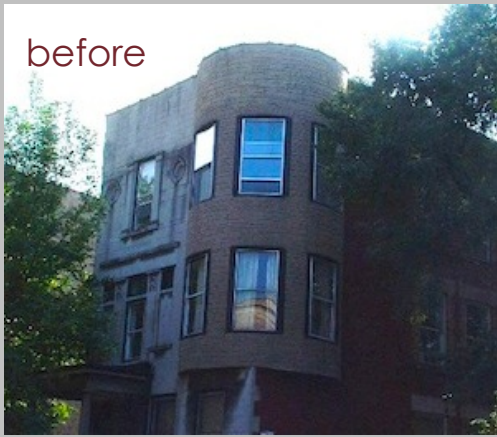


MULTIFAMILY/COMMERCIAL

HISTORIC DISTRICT REMODEL
8 CONDOMINIUM UNITS
UKRAINIAN VILLAGE NEIGHBORHOOD
CHICAGO, IL

The original ornamental metal cornice and turret on this building had been removed years ago. Photographs of the original were not found so a new design was conceived after a study of similar turrets in the neighborhood and the city. The project received a 2006 Preservation Excellence Award from the Commission on Chicago Landmarks.

before



after



12 CONDOMINIUM UNITS
UKRAINIAN VILLAGE
NEIGHBORHOOD
CHICAGO, IL

Completely restored the exterior masonry and converted dysfunctional apartments into spacious one and two bedroom condominium units.



2 CONDOMINIUM UNITS
BUCKTOWN
NEIGHBORHOOD
CHICAGO, IL

Converted from 2 small single floor apartments into 3 bedroom duplex open plan condominiums. The windows were returned to their original size allowing abundant light throughout the space.



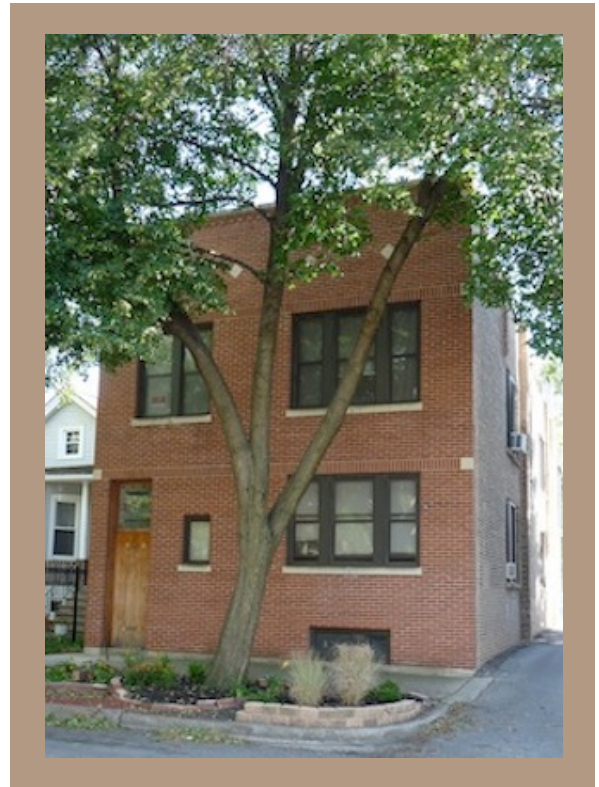
RESORT HOTEL
INDIANA DUNES, INDIANA

This 19th century single family home was converted to 5 unit resort hotel adjacent to the Indiana Dunes. A mismatched addition was removed and replaced with a stucco-faced addition matching the style of the original building. The interior required a complete remodel to meet functional, code and soundproofing requirements.



4 APARTMENT UNITS
BUCKTOWN NEIGHBORHOOD
CHICAGO, IL

A new traditional brick facade replaced a crumbling bricked in storefront. A new custom designed wood door has a transom window with the building address creatively hand painted by a local artist. All work was done while tenants remained in building.



3 CONDOMINIUM UNITS
BUCKTOWN NEIGHBORHOOD
CHICAGO, IL

A new front window and door design on the first floor replace an old storefront. A third floor was added creating 3 large condominium units.



5 APARTMENT UNITS AND RETAIL STOREFRONT
UKRAINIAN VILLAGE NEIGHBORHOOD
CHICAGO, ILLINOIS

The five apartments were completely remodeled, providing contemporary open floor plans. To provide for more space in the narrow retail storefront, a split-level space was created at the rear.

